

ETI 131-1192-00
Bluetooth Communications Module
Instruction Manual



Electronic Technology Incorporated
511 Lyons Avenue, Irvington, NJ 07111
(973) 371-5160 FAX (973) 371-1929
www.eti-nj.com sales@eti-nj.com

SCOPE

The ETI 131-1192-00 Bluetooth Module is used in conjunction with a Palm handheld and ETI's Commander software to wirelessly setup and troubleshoot an ETI MNPR. This module is to be used for temporary communications (as a cable replacement). It is not intended to part of a permanently installed communications system.

WARNING

There are potentially dangerous/lethal voltages present on and around network protectors and related equipment. Always wear appropriate PPE and observe all work rules and safety practices when using this and similar devices.

USAGE

1. Power on the Bluetooth module by pressing the pushbutton on the left side. The blue light on the right side will begin flashing. This indicates that the module is waiting for a connection. The module will remain on for 15 minutes after the last communication with the relay. There is no way to manually turn the module off. In the event that the blue light fails to turn on when the button is pressed, replace the 9V battery under the cover (remove the 4 screws to access).
2. Place the Bluetooth module over the optical window on the MNPR as shown below (MNPR must be powered):



3. Take note of the serial number of the module (in this example it is 1000). This number will be used later to identify the module on the Palm.

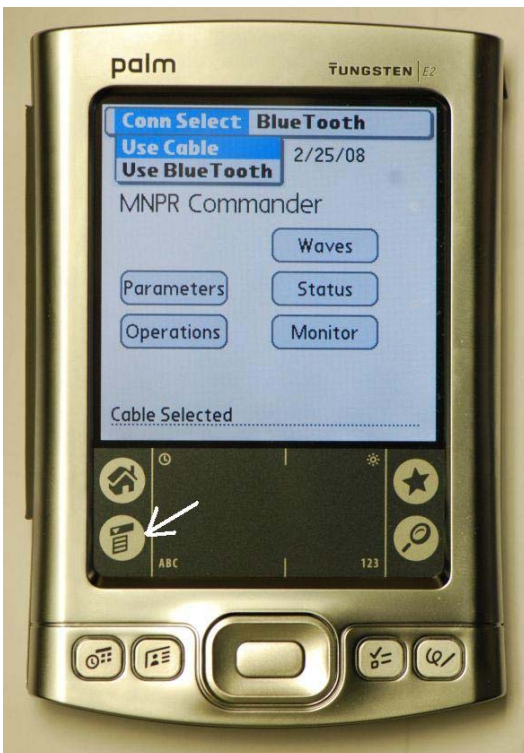
4. Start the ETI Commander software.



6. The status line will now indicate that Bluetooth is selected.



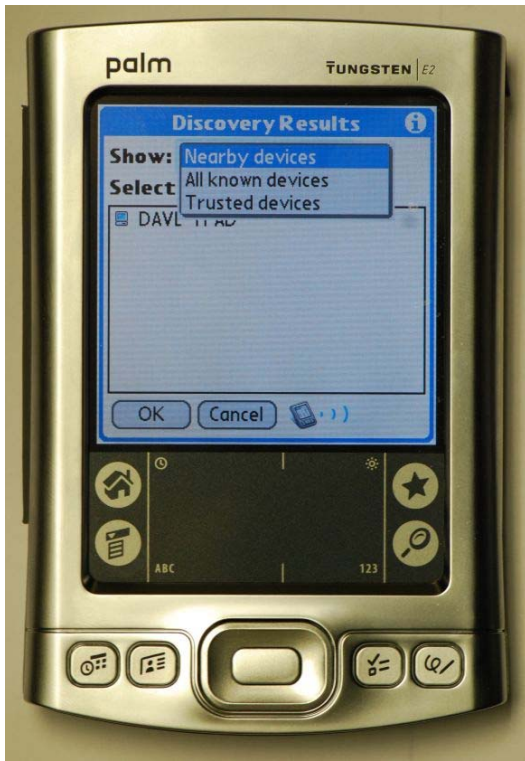
5. Press the menu button (indicated by the arrow) to access the drop down menu, choose "Conn Select" then "Use Bluetooth".



7. From the Bluetooth menu, select Setup New Bluetooth Device.



8. The Bluetooth Discovery Results Screen will now appear. Ensure that “Show: Nearby Devices” is selected.



9. Choose the “ETI OPTO” device with the matching serial number and press OK. If you have another module powered on nearby more than one could show up in the list.



10. The status line will now indicate that Bluetooth is selected and that a module is paired with the palm. The next time Commander is started, it should remember the module it was last paired with. Unless you want to pair a different module, there should be no need to repeat this setup.



11. Commander is now ready to be used. Go to the Parameters screen and press Read. The Palm will connect to the Bluetooth module (the blue light should become solid while it is communicating with the Palm). Refer to the Commander documentation for additional information about the software.

